

SKYE
ADVANCE



MA 6C

MARINE AMBULANCE

01

SkyeAdvance Introduction

04

Vessel Introduction

06

Propulsion and Performance Characteristics

07

The Hull

08

The Deck

12

General Particulars

13

The Trailer

14

Equipment List

At [Skye Advance Africa](#), we are more than boat builders—we are drivers of progress, committed to delivering high-quality, custom-built workboats that serve Africa’s diverse maritime needs. From crew transfers and goods transportation to offshore services and fisheries, our vessels are designed for durability, efficiency, and long-term performance. Constructed using ISO-certified processes, DNV-class materials, and vacuum-infused composite technology, our boats meet the highest industry standards while ensuring operational excellence.

Guided by an “Africa First” ethos, we prioritize regional needs while fostering local talent through workforce development and skills training. Our approach integrates science and research to advance composite technology, offering tailored marine solutions to key markets including Angola, Malawi, Mozambique, and South Africa. Beyond manufacturing, we collaborate with local industries, government agencies, and private stakeholders to develop vessels that meet the evolving demands of Africa’s maritime sector. Whether facilitating safe and efficient offshore crew transportation, supporting sustainable fisheries, or optimizing inland and coastal logistics, every Skye Advance vessel is built with precision and purpose.

Welcome to [Skye Advance Africa](#)—where we don’t just build boats; we build solutions that shape the future of African maritime industries.

In a strategic collaboration, [Skye Advance Africa](#) is partnering with Armacraft Marine Defense, a leader in marine defense innovation.

Welcome to Armacraft Marine Defense, where we believe in the transformative power of "Physics well applied." Since our inception in 2004, we have been at the forefront of pioneering marine defense systems that push the boundaries of innovation and reliability. As a leading force in the industry, we take pride in our unwavering commitment to excellence, precision, and unmatched craftsmanship.

Armacraft Marine Defense is dedicated to developing a comprehensive range of cutting-edge marine defense solutions that ensure utmost security and protection in the most challenging environments. Our portfolio encompasses an array of formidable assets, including Combat boats, landing crafts, patrol boats, search and rescue boats, riverine patrol boats, high-speed interceptors, floating fences, diver delivery vessels, and unmanned surface vessels, among others.

Driven by a team of brilliant minds and engineers, we thrive on solving complex challenges with creativity and technical prowess, delivering unmatched products and solutions tailored to the unique needs of our clients. Our quest for perfection has earned us a reputation for setting new industry standards and consistently exceeding expectations.

As we move forward, our dedication to "Physics well applied" remains unwavering, and our resolve to provide unparalleled marine defense systems continues to guide our path. With every project we undertake, we aim to enhance the security of our clients' missions, enabling them to navigate the waters with confidence, efficiency, and absolute control.

Welcome to Armacraft Marine Defense – Where innovation meets strength, and protection knows no bounds. Join us on this journey as we redefine the future of marine defense.

MARINE AMBULANCE 6 METER CATMARAN



On water

The Mercy 6 functions efficiently on water, including coastal areas, rivers, and mangroves, without requiring any specific infrastructure. Its front ramp and outstanding shallow draft grant it access to even the most remote beaches.



On land

The Mercy 6 utilizes air-cooled, marine-grade systems, ensuring it maintains its full capabilities when being towed on land. This added versatility proves invaluable, especially during operations in or near remote villages and islands.

MARINE AMBULANCE 6 METER CATMARAN

INTRODUCING THE MERCY 6 MARINE AMBULANCE

Revolutionizing Emergency Medical Response

In the ever-evolving landscape of emergency medical services, the MERCY 6 stands as a testament to innovation and adaptability. With its cutting-edge design and versatile capabilities, this marine ambulance sets a new standard in maritime healthcare solutions. Engineered to excel both on water and on land, the MERCY 6 seamlessly combines state-of-the-art features, including a hydrofoil-supported catamaran hull, a robust generator, and an advanced air conditioning system, ensuring uninterrupted medical care in any environment.

Hydrofoil-Supported Catamaran Hull: At the heart of the MERCY 6 lies its hydrofoil-supported catamaran hull, a marvel of engineering that grants unparalleled stability and efficiency in maritime operations. This design not only enhances speed and maneuverability but also guarantees a smooth, comfortable ride, even in challenging sea conditions.

Versatility Beyond Boundaries: The MERCY 6 redefines versatility by seamlessly transitioning from water to land without compromising functionality. Equipped with a meticulously engineered generator and air conditioning system, it ensures that critical medical systems remain operational, regardless of the environment. This groundbreaking feature allows for a seamless transfer of patients from maritime to onshore facilities, optimizing response times and patient outcomes.



MARINE AMBULANCE 6 METER CATMARAN

Capacity for Critical Care: With the capacity to accommodate two stretchers and two paramedics, the MERCY 6 is tailored for high-stakes medical emergencies. Its thoughtfully designed interior maximizes space efficiency, enabling swift and efficient patient care while maintaining essential medical equipment within arm's reach.

Shallow Water Operations and Unsinkable Assurance: The MERCY 6's shallow draft capability empowers it to navigate through areas where traditional vessels would be unable to operate, ensuring access to even the most remote and challenging locations. In addition, its unsinkable design provides an unparalleled level of safety, guaranteeing the well-being of patients and crew in any emergency situation.

Extended Mission Readiness: Recognizing the demands of extended missions, the MERCY 6 incorporates a dedicated marine toilet compartment, offering essential amenities for both patients and medical personnel. This feature underscores our commitment to ensuring the comfort and well-being of all on board during prolonged operations.

In essence, the MERCY 6 represents a monumental leap forward in marine-based emergency medical services. Its fusion of cutting-edge technology, innovative design, and unwavering commitment to patient care redefines the possibilities of maritime healthcare. With the MERCY 6, we usher in a new era of responsiveness and reliability in critical medical situations, ultimately safeguarding lives when every second counts.



PROPULSION SYSTEM



In recent years, modern gasoline outboards have emerged as the preferred choice for commercial applications. Their enhanced refinement, reliability, value, and superior design allow them to largely stay above water. Additionally, their trim feature enables operation in shallow waters, providing an added advantage.

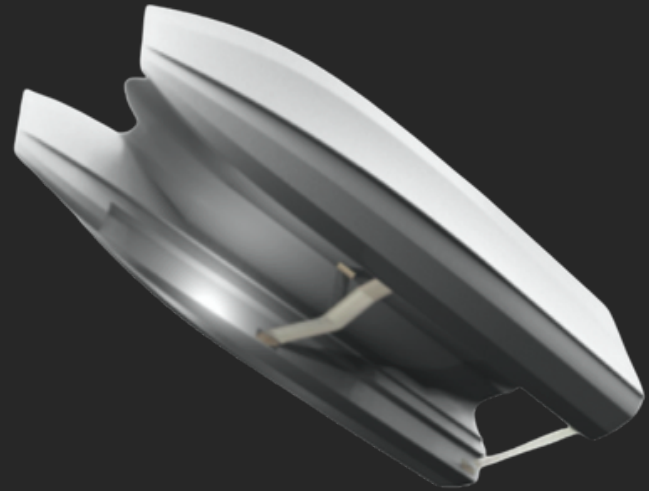


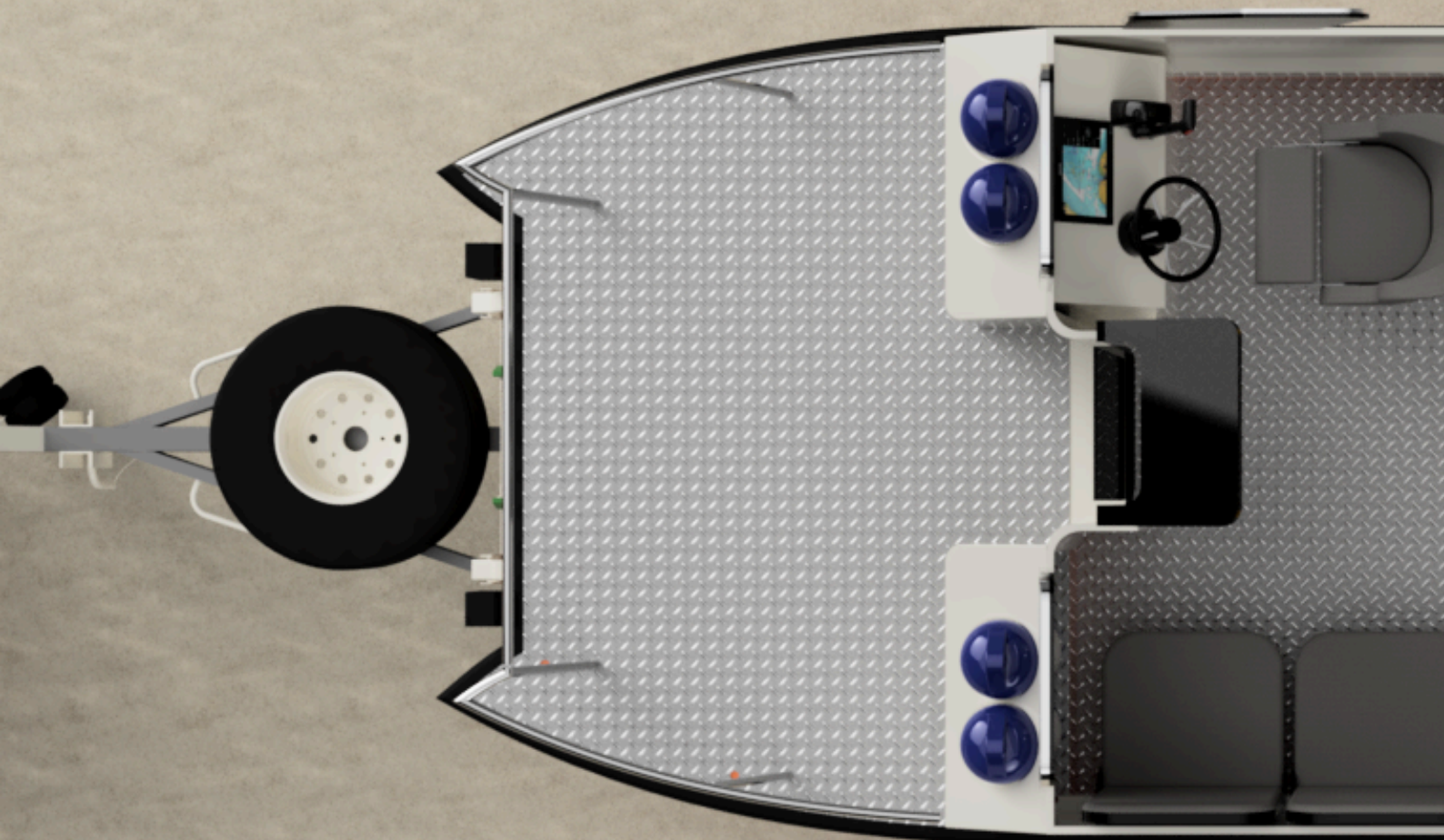
Diesel outboard engines combine the advantages of gasoline models, if at a premium, with increased fuel efficiency, durability, and reliability. This makes them highly suitable for modern vessels across military, commercial, and leisure sectors. This powertrain guarantees optimal performance and operational efficiency, solidifying its position as a compelling choice for contemporary watercraft.



THE HULL ARCHITECTURE AND DESIGN

The hull design combines monohull and catamaran attributes, excelling in maneuverability and efficiency. A hydrofoil system elevates the hull at high speeds, reducing wetted area and power requirements. Positioned strategically, hydrofoils generate lift forces, enhancing wave-handling and passenger comfort. The foils, placed above the keel level, allow safe beaching, adding to the boat's versatility. This well-engineered hydrofoil-supported catamaran epitomizes an innovative blend of agility, speed, and passenger well-being, setting a new standard in modern watercraft engineering.



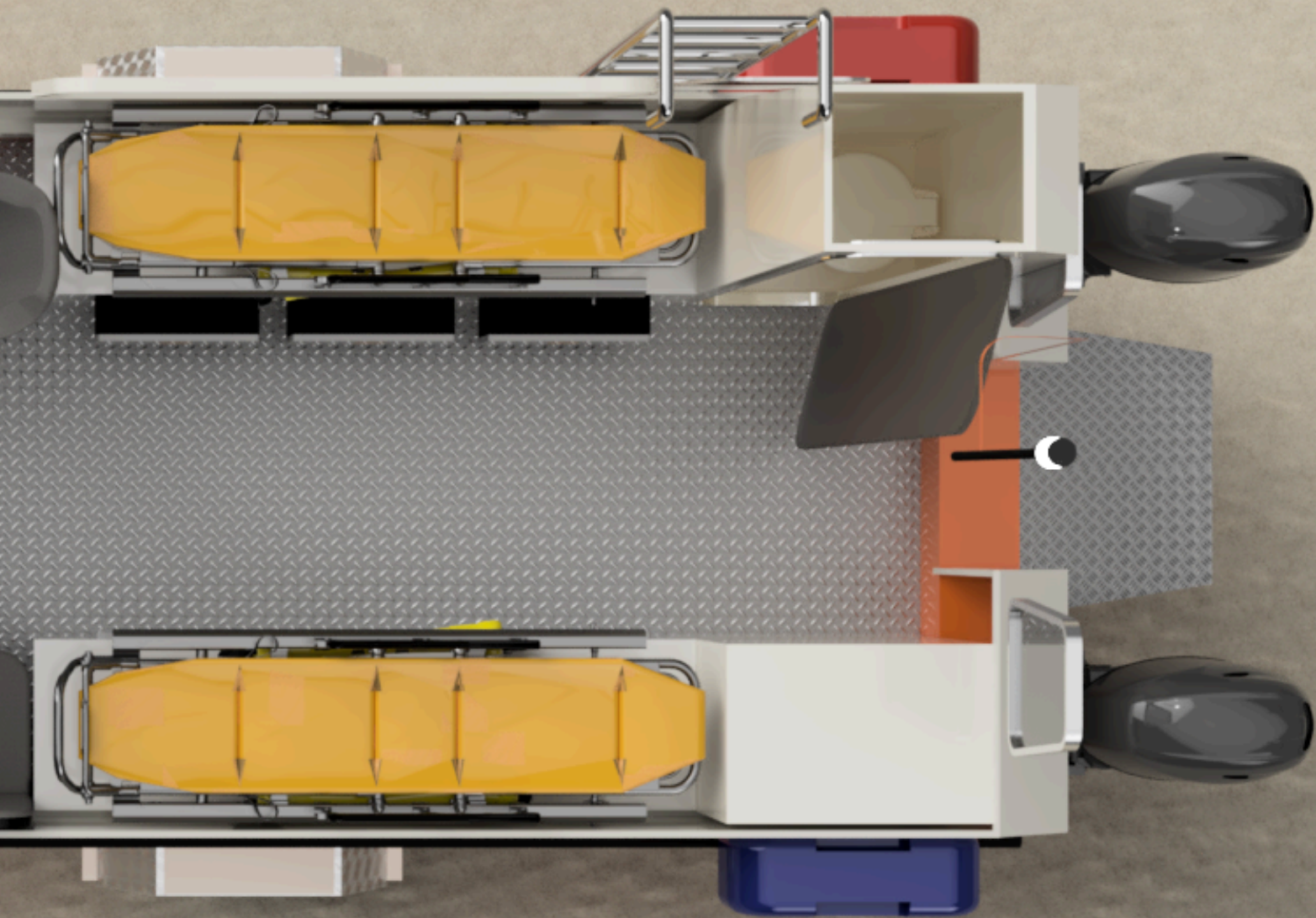


Main Cabin

The cabin of the Mercy 6 is a meticulously designed space that prioritizes functionality, comfort, and efficiency to facilitate optimal medical care in various environments. Here are the key features and aspects of the cabin:

Layout and Configuration: The cabin is intelligently configured to maximize space utilization while ensuring easy access to essential equipment. It is organized to accommodate two stretchers and two paramedics comfortably, allowing for efficient patient care.

Communication and Connectivity: Advanced communication systems are integrated into the cabin, enabling seamless coordination with external medical facilities, emergency services, and relevant authorities. This ensures a high level of connectivity during missions.



Medical Equipment and Supplies: The cabin is equipped with secure storage compartments and mounts to house a range of medical equipment and supplies. This includes vital monitoring devices, life-saving medications, and specialized tools needed for various medical emergencies.

Lighting and Visibility: The cabin is designed with ample lighting to ensure optimal visibility for medical procedures, even in low-light conditions. This includes overhead lighting fixtures and strategically placed task lighting for focused examination and treatment.

Ventilation and Climate Control: The cabin is equipped with a reliable ventilation system to ensure a consistent flow of fresh air. This is essential for maintaining a comfortable and healthy environment for both patients and paramedics. Additionally, climate control features ensure a suitable temperature regardless of external conditions.



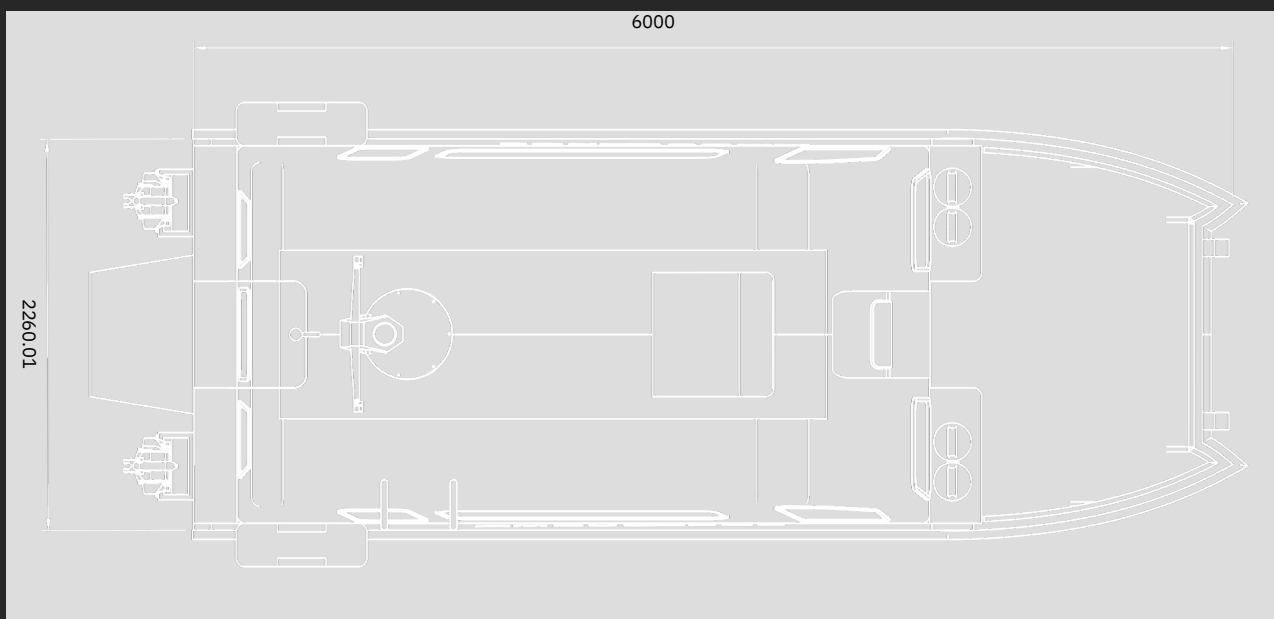


AMBULANCE

GENERAL PARTICULARS

For the 2024 model year

LENGTH OVERALL	6.4 M	FUEL CAPACITY	200 L
LENGTH OF HULL	6 M	WATER CAPACITY	80 L
BEAM	2.26 M	POWER	100-150 HP
DRAFT	0.28 M	MAX SPEED (LIGHTSHIP)	25 KTs
DRY WEIGHT	1,850 KG	MAX ECONOMIC RANGE	230 NM
ENGINES	Outboard	CREW	1
Fuel	Gasoline/Diesel	EMTs	2
CLASSIFICATION	Category C Coastal: Designed for voyages in coastal waters, large bays, estuaries, lakes and rivers where conditions up to, and including, wind force 6 and significant wave heights up to, and including, 2 meters.		



THE OFF ROAD TRAILER

An off-road trailer for a marine ambulance offers several distinct advantages:

- 1. Versatility and Accessibility:** The off-road trailer significantly expands the operational range of the marine ambulance. It allows the ambulance to navigate over rough or unpaved terrain, granting access to remote and hard-to-reach areas that may be inaccessible by standard vehicles.
- 2. Seamless Transition from Water to Land:** The trailer facilitates a smooth transition from water to land. This is particularly important for emergencies that require immediate attention upon reaching the shore. The marine ambulance can quickly disembark from the water and continue its journey overland without the need for additional vehicles or equipment.
- 3. Extended Reach for Medical Emergencies:** With an off-road trailer, the marine ambulance can venture deeper into coastal or island regions, reaching communities that are located farther from the shoreline. This is crucial for providing timely medical assistance to residents and visitors in remote areas.
- 4. Enhanced Safety and Reliability:** The trailer is engineered to withstand rugged terrains, ensuring that the marine ambulance remains stable and secure during overland travel. This added safety measure is critical for maintaining the well-being of both patients and medical personnel.
- 5. Cost-Effectiveness and Efficiency:** Instead of requiring separate vehicles or equipment for land-based operations, the off-road trailer consolidates transportation needs. This reduces logistical complexities and costs associated with deploying multiple vehicles for marine and land operations.

In conclusion, an off-road trailer significantly enhances the capabilities of a marine ambulance, allowing it to operate seamlessly on both water and land. It extends the reach of emergency medical services to remote and challenging terrains, ensuring that critical care can be delivered promptly to those in need, regardless of their location.



EQUIPMENT LIST

Automatic bilge pumps X 2	S	Vacuum flush toilet	O
Manual bilge pump	S	First Aid Bag X 2	O
LED navigation lights	S	Blood Pressure Cuffs	O
Blue courtesy lights	S	Medical Gases	O
Swim ladder	S	Medical Suction Unit	O
Digital Switching	S	Patient monitor X 2	O
NAV System with GPS &	S	Defibrillator unit	O
Sounder	S	Intubation Kits	O
Bow Ramp	S	Patient monitor X 2	O
Digital switching system	S	Defibrillator unit	O
Chartplotter/fishfinder 7"	O	Marine Air Conditioning	O
Electric Windlass	O	Freshwater system (5 points)	O
Generator 5 KW	O	Air Horn	O
25 Watt Megaphone	O	Emergency Strobe Lights	O
Searchlight	O	Battery charger	O
Basket stretcher X 2	O		



WHY MERCY 6

Having a marine ambulance is crucial for countries with long coastlines or numerous islands due to several significant reasons:

- 1. Rapid Response in Emergencies:** Marine ambulances significantly reduce response times in emergencies that occur in coastal or island areas. They can swiftly reach locations inaccessible by land, ensuring timely medical attention to those in need.
- 2. Access to Remote Areas:** Coastal and island regions often have remote or hard-to-reach locations. A marine ambulance can navigate through waterways and reach places that may be inaccessible by traditional land-based ambulances. This is especially critical for emergencies in secluded or isolated areas.
- 3. Natural Disasters and Emergencies:** Countries with long coastlines or many islands are often prone to natural disasters like tsunamis, hurricanes, or floods. A marine ambulance can play a vital role in evacuation efforts and providing immediate medical assistance during such crises.
- 4. Supporting Fishing and Maritime Industries:** In countries heavily dependent on fishing or maritime industries, having a marine ambulance is critical for ensuring the health and safety of workers. It provides prompt medical attention in case of accidents or emergencies at sea.
- 5. Tourism and Recreational Activities:** Coastal areas and islands are often popular tourist destinations. A marine ambulance ensures the safety and well-being of visitors engaged in water-based activities, such as swimming, diving, or boating.
- 6. Preventive Healthcare Measures:** A marine ambulance can also be used for preventive healthcare initiatives, such as conducting medical check-ups or vaccinations in remote coastal or island communities.

In summary, a marine ambulance is an indispensable asset for countries with long coastlines or many islands. It enhances emergency medical response capabilities, safeguards the well-being of coastal and island populations, and contributes to the overall resilience of a nation's healthcare infrastructure.



SKYE
ADVANCE



ARMA CRAFT
MARINE DEFENCE